

MADJAX

Installation Instructions for:

LED ULTIMATE LIGHT KIT PLUS #02-047

LED ULTIMATE LIGHT KIT PLUS- WITH RGB #02-098

Will fit E-Z-GO® RXV® (2008-2015)



ITEMS INCLUDED

Front and Rear lights
Wiring harness
Hazard switch
Turn Signal Assembly
Electric Brake Switch
Gas Brake Switch Horn
USB Charger
48-12v Converter
Column Cover
RGB Module (02-098)

TOOLS NEEDED

#2 Phillips Head Screw Driver
Rotary Cutting Tool
Sandpaper
Power Drill
15/32" Drill Bit

Control box features:

- 30 second turn signal timer
- Eliminates flashers/ Relay
- Brake Lights Automatically turn off after 3 minutes of setting parking brake.

RGB Module controlled by
Happy Light App



iOS 7.0 & Android 4.3

We recommend professional installation. If you choose to not have this product installed by a professional, we highly recommend that you exercise caution, care, and patience when installing this product.



Important: Any modifications made to the wiring harness or lights in this kit will void the warranty. Any damages that occur to the kit or cart will be the sole responsibility of the installer.

ATTENTION: The Instructions for this Ultimate Plus Light Kit & RGB Light Kit are identical

STEP 1

Switch key to OFF position. Place TOW/RUN switch to TOW. It is not required to remove the batteries but you do need to disconnect the main negative.

STEP 2

If needed lift cart and place jack stands under frame to support. Feed the headlight portion of the harness down through the front of the battery compartment. Route the wiring harness through the holes in the frame on the **Driver's side**. Run (red) tail light wire around battery compartment and over the rear tire well on the passenger's side. Run short tail light wire (white) over the rear tire well on the driver's side. Loosely secure with zip ties until all lights are installed.

Red 3 pin connector's are for the passenger's side, white connector's for driver's side.

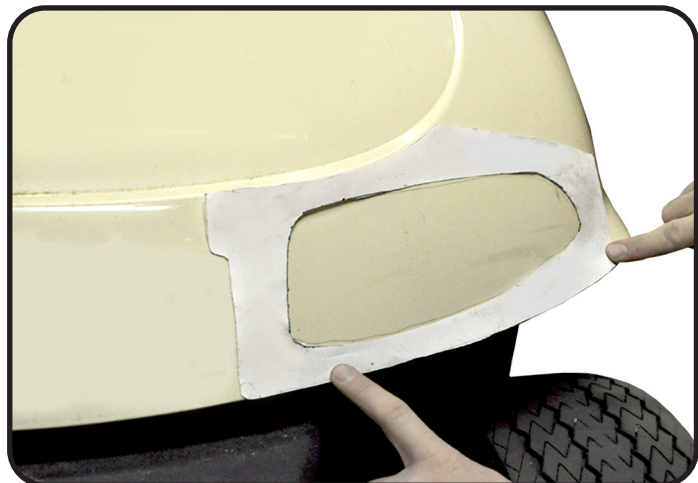


STEP 3

For carts without a pre-cut hole

Align headlight template to the body contour as shown using the template notes for proper placement. Use a marking pen to trace the cut out. Drill a pilot hole as a starting point, then use a rotary cutting tool to cut out the headlight. Be sure to cut to the inside of the marked line. Use sandpaper to smooth edges.

***Flip template over and repeat process on other side.**

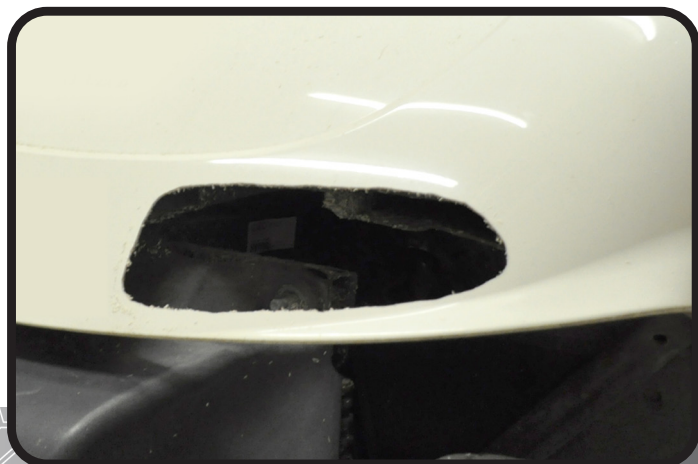


STEP 4

For carts with factory lights

Disconnect factory headlight wiring.

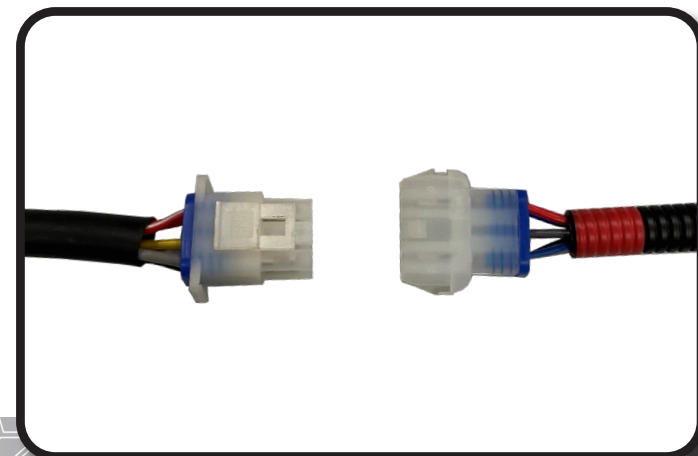
Remove factory headlight from the cowl.



STEP 5

Plug in 6 pin connector from headlight to 6 pin on harness.

NOTE: Red connector for Passenger side

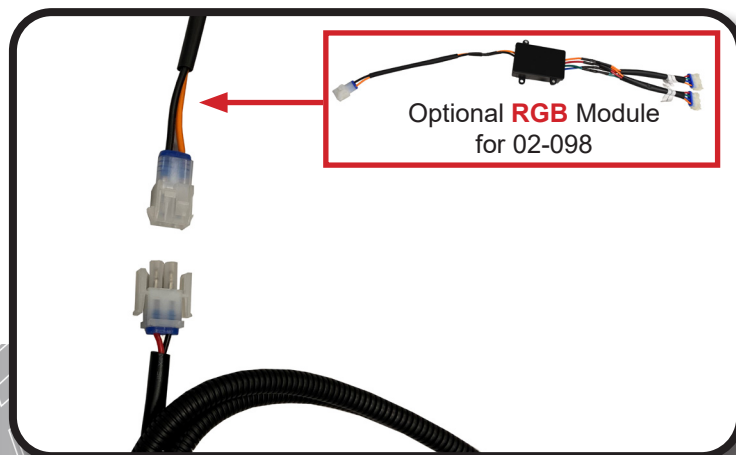


OPTIONAL RGB MODULE INSTALL FOR 02-098 ULTIMATE PLUS RGB LIGHT KIT

ATTENTION: For Ultimate Plus Light Kit Instructions (02-047), Skip to Step 6.

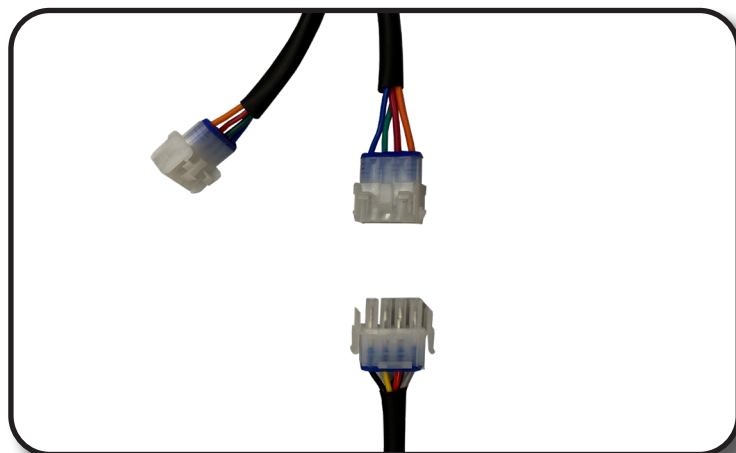
STEP A

Connect the 2-Pin Connector from RGB Module to the Light Kit Harness.



STEP B

Connect the 4-pin Connector from RGB Module to the Headlight.



OPTIONAL RGB MODULE INSTALL COMPLETE

STEP 6

Mount headlight through the cutout. Push top half in first as shown.

*Repeat process on opposite side.



STEP 7

For carts without a pre-cut hole

Align Tail Light template to the body as shown using the template notes for proper placement. Use a marking pen to trace the cut out. Drill a pilot hole as a starting point, then use a rotary cutting tool to cut out the tail light. Be sure to cut to the inside of the marked line. Use sandpaper to smooth edges.

***Flip template over and repeat process on other side.**



STEP 8

For carts with factory lights

Remove factory tail light hardware. Retain hardware. Disconnect factory tail light wiring harness from tail light.



STEP 9

Feed the new tail light harness through the tail light cut out. Attach tail light to wire harness as shown. Secure wire with supplied zip ties.



STEP 10

Place tail light into the rear of the vehicle. Insert four screws into Tail light using supplied hardware.

*Repeat process on opposite side



STEP 11

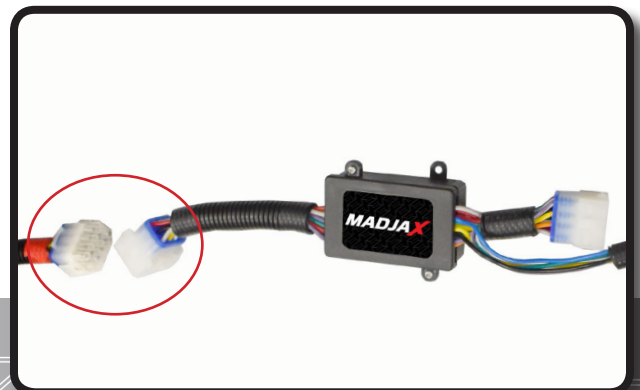
Take out the torx head screws highlighted and remove dashboard. Retain hardware.

*You do **not** need to completely remove dashboard.



STEP 12

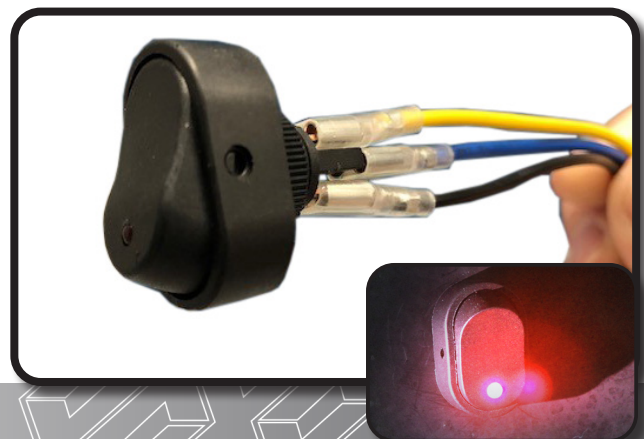
Plug in the 12 pin connector from the main harness to the 12 pin connector on the turn signal module secure module behind dash.



STEP 13 *Hazard Switch Install*

Find a desired location on your dash to mount the hazard switch. Ensure the location is free of obstacles and will not affect dash reattachment. Using a 15/32" bit, drill a mounting hole and insert switch into dash. Secure with the ring nut from back of switch.

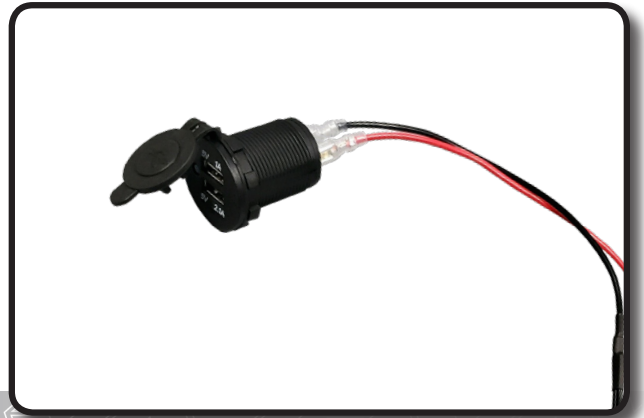
Reattach wires: Black behind led, Blue on center post, and Yellow on top post.



STEP 14 *USB Charger Install*

Using a 1 1/8" paddle bit, find a desired location on your golf cart dashboard to mount your USB charger. Ensure your location is free of obstacles and will not affect dash reattachment.

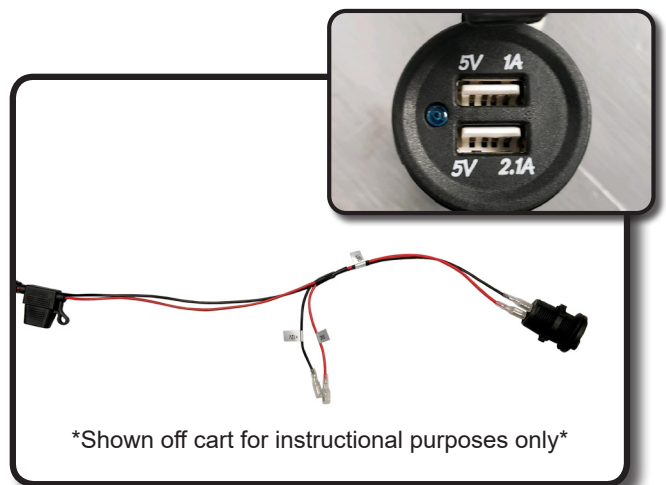
Note: You can use the ring nut as a template for cut out.



STEP 15

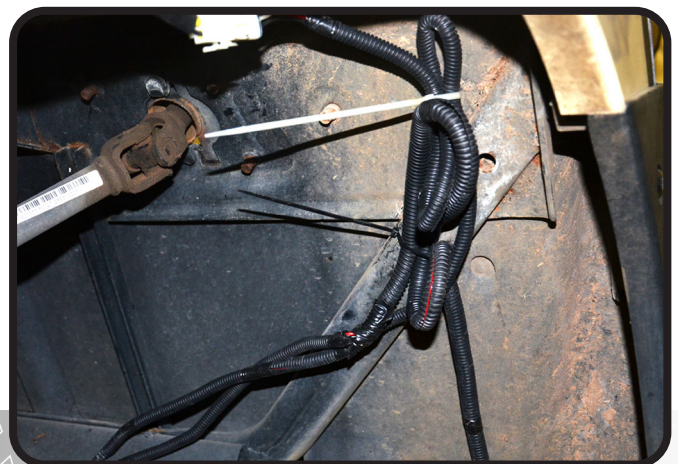
Using the supplied ring nut, mount the charger in the to your cart.

Plug the red and black 12 volt accessory connection from the light kit harness to the spade terminals on the back of the charger, red to (+) and black to (-).



STEP 16

Secure remaining harness under cowl using provided ties.



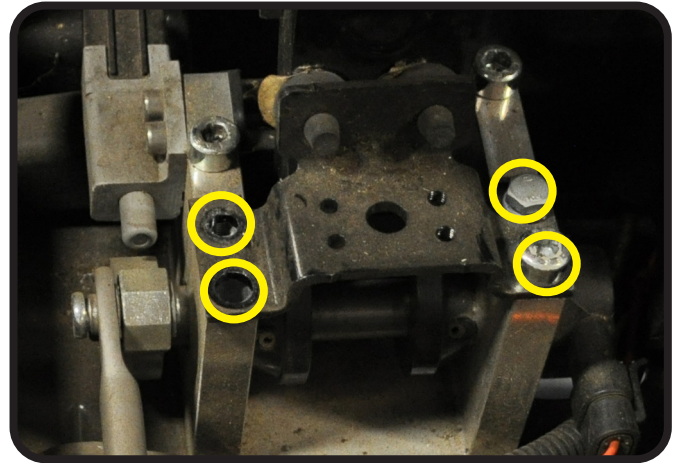
NOTE: If installing on an electric car, see Steps 17 & 18. If installing on a gas car, skip forward to Step 19.

STEP 17 *Brake Switch Install*

Loosen all 4 bolts holding the brake pedal stop bracket to the brake assembly.

Remove the 2 driver's side bolts (you may have to press pedal to release pressure).

With the wires facing the rear of the cart, slide the brake switch bracket between the pedal stop bracket and the pedal assembly until the mounting holes align. Do not tighten bolts because you will need to adjust the bracket's position.



STEP 18

Adjust the position of the switch bracket until you can hear the switch click as you press the brake pedal. There should only be a small amount of travel before the switch clicks. Tighten the 4 bolts holding the brake pedal stop bracket.

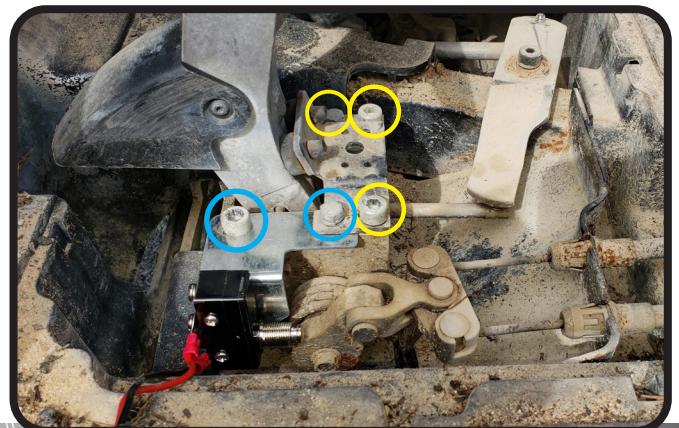
Plug the 2 bullet connectors from the brake switch into the corresponding bullet connectors on the light kit harness. Route the wiring away from the brake pedal assembly and brake cables. Secure all wiring so that it is away from moving parts.



STEP 19 *Gas*

Using a 10mm socket and a 6mm Allen wrench, remove the two bolts circled in blue and loosen the three bolts circled in yellow. Slide the brake switch bracket between the pedal stop and the pedal group bracket. Reinstall the two bolts circled in blue. Adjust the switch so it is actuated after the pedal begins to move. Tighten all bolts.

Plug the 2 bullet connectors from the brake switch into the corresponding bullet connectors on the light kit harness. Secure all wiring so that it is away from moving parts.



STEP 20

Turn Signal Install

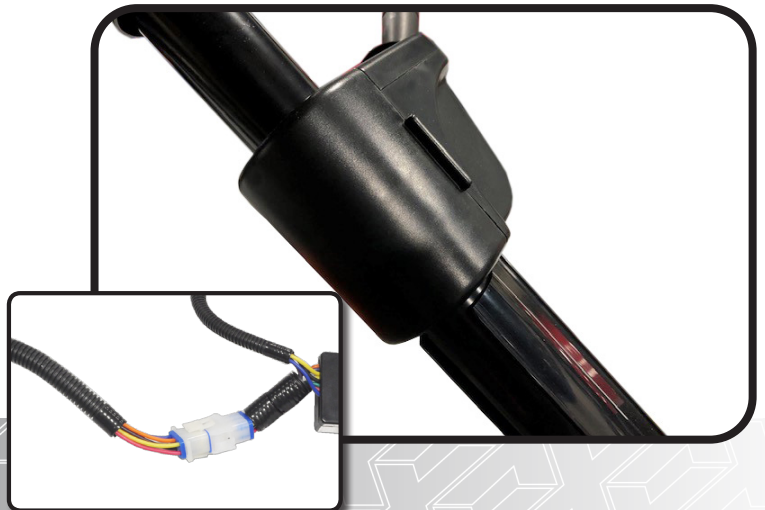
Mount indicator assembly using clamps provided and tighten. Run indicator harness along steering column and insert harness through dash.



STEP 21

Attach turn signal back cover to turn signal assembly. Attach column cover to steering column, secure harness in column cover void.

Plug in the Turn Signal harness to the Control Box harness as shown.



STEP 22

Attach horn to purple and black female spade connectors from front of harness and secure horn to metal framework under front cowl with a self tapping screw.

Note: Horn is operated at the Turn Assembly.

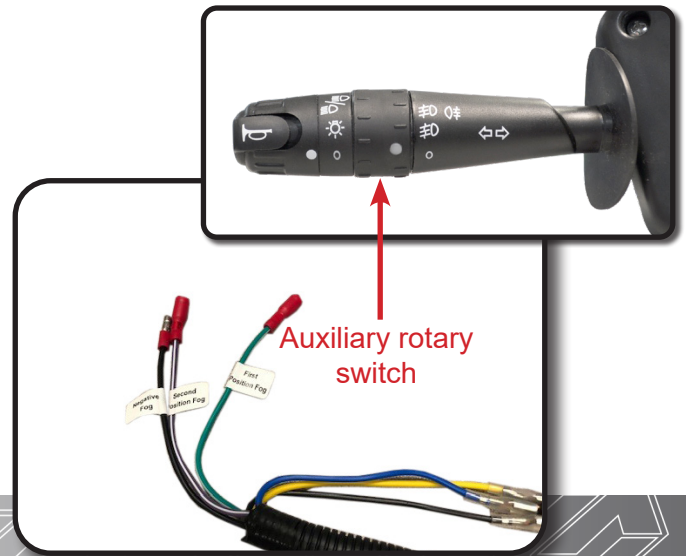
***Wires have no orientation and will work on either post**



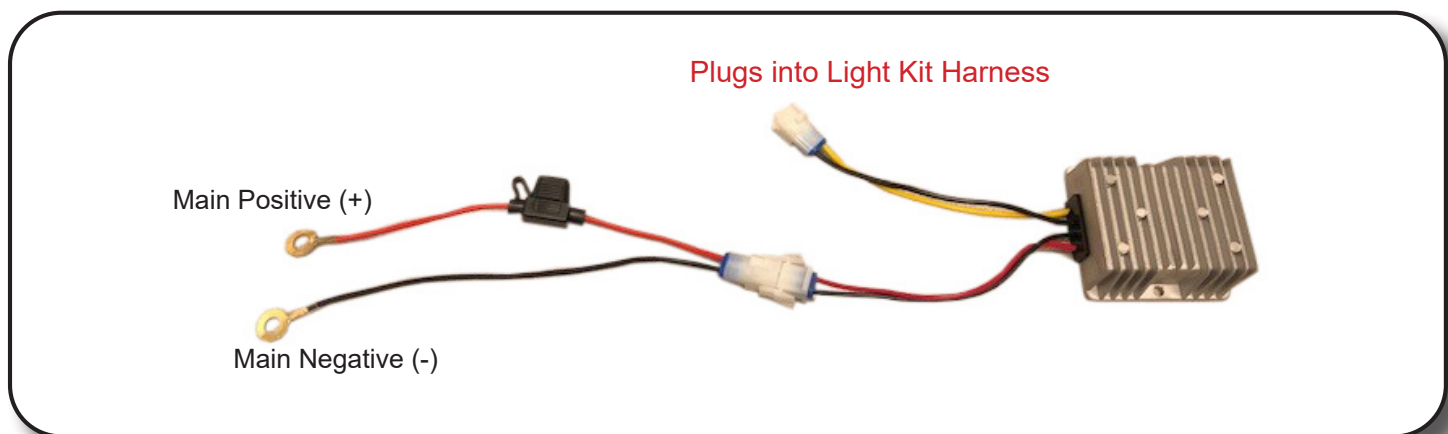
STEP 23 *Auxiliary Switch Feature*

The turn signal handle has a secondary, 2-position rotary switch for auxiliary 12 volt lighting such as fog lights and/or LED light bars. There is one common negative wire and two positive wire connections to run two different auxiliary lights. Additional wiring and lighting not included.

Reinstall dashboard using retained hardware from Step 12.



STEP 24 *Converter Install*



The voltage converter included must be used on all carts electric and gas. Connect the red wire with the fuse to the Main positive terminal of the battery pack. Connect the black wire to the Main negative terminal of the battery pack and tighten hardware.

Mount the converter to a flat surface under the seat. (Metal area is preferred). Plug the connector with the yellow and black wire into the light kit harness (you will notice a small arc when connecting). Reconnect battery and place run/tow switch to run.

***Use converter on gas carts to prevent Starter Generator voltage spikes that could cause damage to accessories.**

INSTALLATION COMPLETE

E-Z-GO®, TXT®, RXV® and S4® are registered trademarks of Textron Innovations, Inc. Club Car®, Precedent®, DS®, Onward® and Tempo® are registered trademarks of Ingersoll Rand, Inc. Yamaha®, Yamaha® Drive®, Drive2®, G-14®, G-16®, G-19®, G-22® and G-29® are registered trademarks of Yamaha Golf-Car Company. Any reference to Club Car®, E-Z-GO®, or Yamaha® or their associated trademarks, word marks, and products are only for purposes of identifying golf carts with which this Madjax product is compatible. Madjax products are aftermarket parts and are not original equipment parts. Madjax is not connected to, affiliated with, sponsored by, or endorsed by either Textron Innovations, Inc., Ingersoll Rand, Inc., Yamaha Golf Cart Company, or any of their parent or subsidiary companies.